



spotlight on VET

# PORTUGAL

## VET in Portugal

Central government has overall responsibility for education and training. The Ministry of Education is responsible for most types of education, including school-based vocational education and training (VET), while the Ministry of Employment is responsible for the apprenticeship system, CVET and active labour market policies. The ministries share responsibilities for school-based VET and develop key policies, while the respective regional bodies are responsible for implementation. The national qualifications system (SNQ) reorganised VET in education and in the labour market into a single system.

Young people can choose different types of VET programme if they meet admission requirements in terms of age and educational background. Permeability is ensured between general and VET programmes.

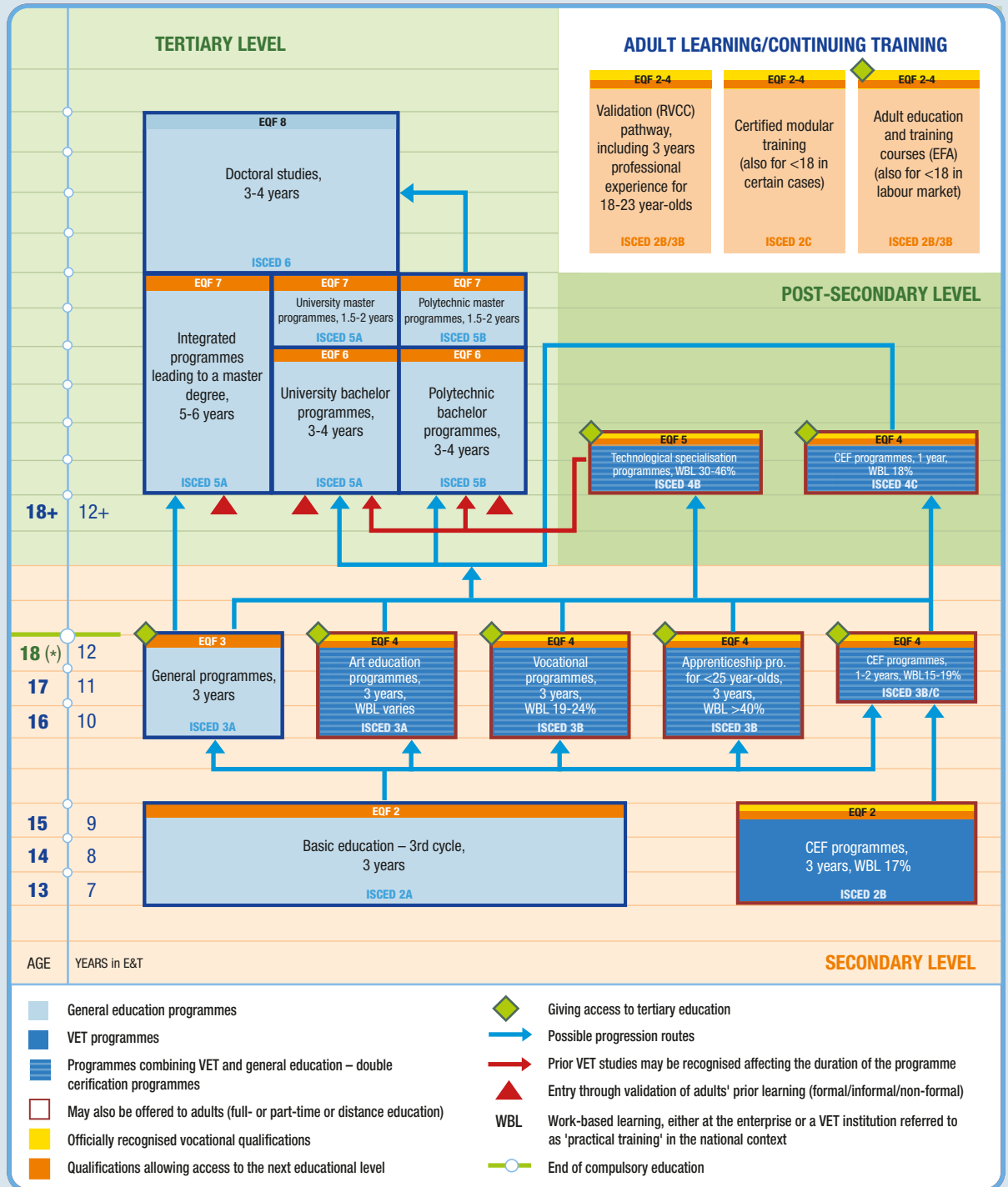
- **VET programmes at basic education level** (VET programmes for young people:  *cursos de educação e formação de jovens* (CEF), ISCED 2B) are school-based and include work-based learning (WBL, referred to as ‘practical training’ in the national context). Learners need to be over 15 and should have completed the first cycle of basic education (four years). They award qualifications at level 2 of the national (QNQ) and the European qualifications framework (EQF). They are designed for young people at risk of leaving school early or who have already left the school system before completing their compulsory education; they allow progression to several types of programme, including other CEF programmes available at secondary and post-secondary level. Since 2012, vocational programmes for youngsters aged 13 or older have been introduced in some schools as pilot projects.
- **VET programmes at secondary education level** (vocational programmes, CEF and art education programmes, ISCED 3) are school-based and include WBL, except for some art education programmes. Learners need to be over 15 and should have completed basic education. Successful learners are granted both a secondary level education certificate and an occupational qualification at EQF level 4, which may lead either to employment or further education, including higher education.

- **Apprenticeship programmes** (ISCED 3B) include 40% workplace training. A contract between the enterprise and the apprentice is compulsory. Access is possible for learners below 25 who have completed basic education. Courses are specifically designed to help young people enter the labour market, although they also allow further studies in higher education. Successful learners are granted double certification at EQF level 4.
- **Programmes at post-secondary non-tertiary level** (ISCED 4) combine general, scientific and technological training in school with work-based learning. WBL is 30 to 46% in technological specialisation programmes (TSP) and 18% in post-secondary CEF. Learners need to be over 18, have acquired EQF level 4 or be in the last year of secondary education or have a higher education diploma. These programmes award qualifications at EQF level 4 (CEF) or 5 (TSP) and a technological specialisation diploma and can also be provided in higher education institutions.

Over the past decade, policy developments have aimed at raising adults’ qualifications by widening access to VET to increase participation.

- **Adult education and training courses** (EFA, ISCED 2B/3B) are flexible training schemes available for people over 18 who wish to complete basic or secondary education and/or obtain an occupational qualification (EQF levels 2-4).
- **Certified modular training courses** (ISCED 2C) are credit-based and allow learners to select individual units. They generally address people over 18 who have not completed basic or secondary education/training. Upon successful completion of each module, and assessment by a technical committee, a final certificate and diploma are issued (EQF levels 2-4).
- **Recognition, validation and certification of competences** (RVCC, ISCED 2B/3B) is based on the principle of lifelong learning and targets people over 18. The two different RVCC processes (general ‘academic’ and vocational) can lead to either a basic or secondary level education certificate (at EQF levels 2-4) or an occupational certificate (VET qualification at EQF levels 2-4). Adults lacking competences required for a qualification are guided to relevant training programmes to acquire them.

# VET in the Portuguese education and training system



NB: The vertical axis is for reference purposes and applies only to the general education programmes. ISCED 1997 was used on the chart. Conversion to ISCED 2011 is ongoing.  
 Source: Cedefop and ReferNet Portugal.

## VET in Portugal

Central government has overall responsibility for education and training. The Ministry of Education is responsible for most types of education, including school-based vocational education and training (VET), while the Ministry of Employment is responsible for the apprenticeship system, CVET and active labour market policies. The ministries share responsibilities for school-based VET and develop key policies, while the respective regional bodies are responsible for implementation. The national qualifications system (SNQ) reorganised VET in education and in the labour market into a single system.

Young people can choose different types of VET programme if they meet admission requirements in terms of age and educational background. Permeability is ensured between general and VET programmes.

- **VET programmes at basic education level** (VET programmes for young people: *curtos de educação e formação de jovens* (CEF), ISCED 2B) are school-based and include work-based learning (WBL, referred to as ‘practical training’ in the national context). Learners need to be over 15 and should have completed the first cycle of basic education (four years). They award qualifications at level 2 of the national (QNQ) and the European qualifications framework (EQF). They are designed for young people at risk of leaving school early or who have already left the school system before completing their compulsory education; they allow progression to several types of programme, including other CEF programmes available at secondary and post-secondary level. Since 2012, vocational programmes for youngsters aged 13 or older have been introduced in some schools as pilot projects.
- **VET programmes at secondary education level** (vocational programmes, CEF and art education programmes, ISCED 3) are school-based and include WBL, except for some art education programmes. Learners need to be over 15 and should have completed basic education. Successful learners are granted both a secondary level education certificate and an occupational qualification at EQF level 4, which may lead either to employment or further education, including higher education.

- **Apprenticeship programmes** (ISCED 3B) include 40% workplace training. A contract between the enterprise and the apprentice is compulsory. Access is possible for learners below 25 who have completed basic education. Courses are specifically designed to help young people enter the labour market, although they also allow further studies in higher education. Successful learners are granted double certification at EQF level 4.
- **Programmes at post-secondary non-tertiary level** (ISCED 4) combine general, scientific and technological training in school with work-based learning. WBL is 30 to 46% in technological specialisation programmes (TSP) and 18% in post-secondary CEF. Learners need to be over 18, have acquired EQF level 4 or be in the last year of secondary education or have a higher education diploma. These programmes award qualifications at EQF level 4 (CEF) or 5 (TSP) and a technological specialisation diploma and can also be provided in higher education institutions.

Over the past decade, policy developments have aimed at raising adults’ qualifications by widening access to VET to increase participation.

- **Adult education and training courses** (EFA, ISCED 2B/3B) are flexible training schemes available for people over 18 who wish to complete basic or secondary education and/or obtain an occupational qualification (EQF levels 2-4).
- **Certified modular training courses** (ISCED 2C) are credit-based and allow learners to select individual units. They generally address people over 18 who have not completed basic or secondary education/training. Upon successful completion of each module, and assessment by a technical committee, a final certificate and diploma are issued (EQF levels 2-4).
- **Recognition, validation and certification of competences** (RVCC, ISCED 2B/3B) is based on the principle of lifelong learning and targets people over 18. The two different RVCC processes (general ‘academic’ and vocational) can lead to either a basic or secondary level education certificate (at EQF levels 2-4) or an occupational certificate (VET qualification at EQF levels 2-4). Adults lacking competences required for a qualification are guided to relevant training programmes to acquire them.



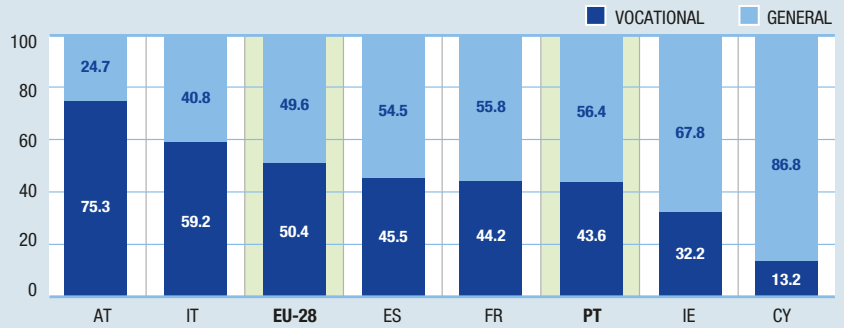
# PORTUGAL



## Education and training in figures

### Learners in upper secondary education enrolled in vocational and general programmes

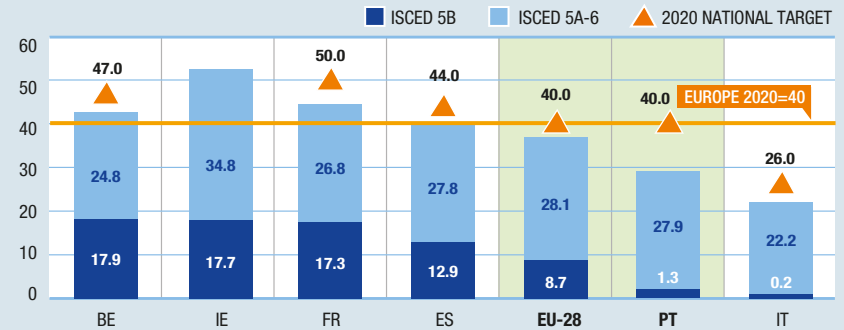
% of all students in upper secondary education, 2012



Source: Eurostat, UOE data collection on education systems, date of extraction 30.5.2014.

### Tertiary education by type

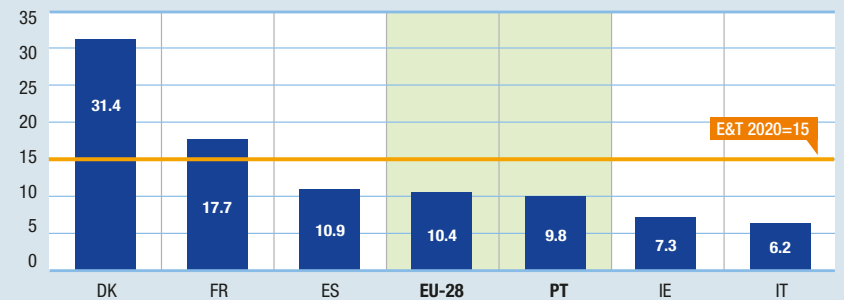
% of 30-34 year-olds with tertiary education by type, 2013



Source: Cedefop calculations based on Eurostat, labour force survey, date of extraction 19.5.2014.

### Lifelong learning

% of population aged 25-64 participating in education and training over the four weeks prior to the survey, 2013

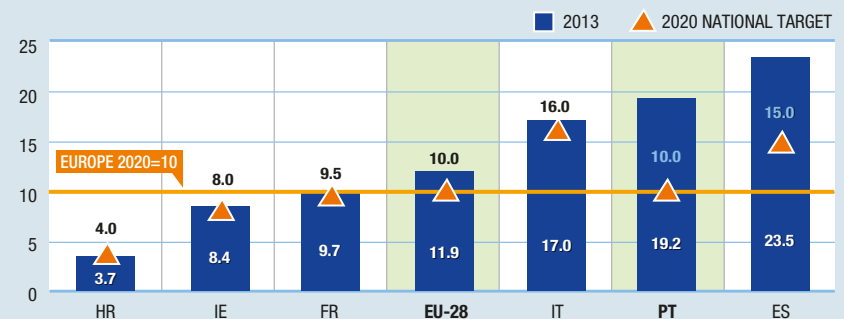


NB: Break in series for France.

Source: Eurostat, labour force survey, date of extraction 19.5.2014.

### Early leavers from education and training

% of early leavers from education and training, 2013



NB: Break in series for France.

Source: Eurostat labour force survey, date of extraction 19.5.2014.



## Further information

- Cedefop ReferNet Portugal (2013). *VET in Europe – Country report*. [http://libserver.cedefop.europa.eu/vetelib/2013/2013\\_CR\\_PT.pdf](http://libserver.cedefop.europa.eu/vetelib/2013/2013_CR_PT.pdf)
- Eurydice (2013). Portugal: overview. In: European Commission (ed.). *Eurypedia*. <https://webgate.ec.europa.eu/fpfis/mwikis/eurydice/index.php/Portugal:overview>

<a href="http://www.portugal.gov.pt">www.portugal.gov.pt</a>	Government web portal
<a href="http://www.dgert.mtss.gov.pt">www.dgert.mtss.gov.pt</a>	Directorate-General for Employment and Industrial Relations
<a href="http://www.dgert.mtss.gov.pt/refernet">www.dgert.mtss.gov.pt/refernet</a>	ReferNet Portugal
<a href="http://www.dges.mctes.pt/DGES/pt">www.dges.mctes.pt/DGES/pt</a>	Directorate-General for Higher Education
<a href="http://www.anqep.gov.pt/default.aspx">www.anqep.gov.pt/default.aspx</a>	National Agency for Qualification and Vocational Education and Training
<a href="http://www.iefp.pt">www.iefp.pt</a>	Institute for Employment and Vocational Training
<a href="http://www.cnedu.pt">www.cnedu.pt</a>	National Council of Education
<a href="http://www.catalogo.anqep.gov.pt">www.catalogo.anqep.gov.pt</a>	National catalogue of qualifications
<a href="http://www.garantiajovem.pt">www.garantiajovem.pt</a>	Youth guarantee
<a href="http://www.adcoesao.pt/index.html">www.adcoesao.pt/index.html</a>	Cohesion and Development Agency
<a href="http://www.poph.qren.pt">www.poph.qren.pt</a>	Human potential operational programme
<a href="http://www.ine.pt">www.ine.pt</a>	Statistics Portugal

This spotlight is based on input from ReferNet Portugal.



**CEDEFOP**

European Centre for the Development of Vocational Training

Europe 123, 570 01 Thessaloniki (Pylea), GREECE  
 PO Box 22427, 551 02 Thessaloniki, GREECE  
 Tel. +30 2310490111, Fax +30 2310490020, E-mail: [info@cedefop.europa.eu](mailto:info@cedefop.europa.eu)

Copyright © European Centre for the Development of Vocational Training (Cedefop), 2014  
 All rights reserved.

**visit our portal [www.cedefop.europa.eu](http://www.cedefop.europa.eu)**



Publications Office

9 78-92-896-1398-9



9 789289 613989